



DOF and Citizens Associations

- Management plans for common area trees
- Educational programs – environmental, tree benefits and tree care
- Newsletter content
- Tree planting
- Homeowner advice on tree care – limited
- Available evenings and weekends

Emerald Ash Borer



Northern Virginia Urban forest
Roundtable

September 18, 2008

JIM McGLONE, URBAN FOREST CONSERVATIONIST





Emerald Ash Borer

- Native to North East Asia
- First Appeared in Detroit Area
- Probably Entered in Packing Material
- No Forestry Remedy
- Arboricultural Remedy - Yearly Injection/Root Soaks
- Only Attacks Ash (*Fraxinus* spp.)

Cooperative Emerald Ash Borer Project

EAB locations in Illinois, Indiana, Michigan,
Maryland, Ohio, Pennsylvania, West Virginia
and southwest Ontario, Canada

May 1, 2008

Map Key

- EAB positive
- Site under evaluation (symptoms, found in firewood, or eradicated)
- ◆ Federal EAB quarantine boundaries
- State quarantine-generally infested area
- State quarantine
- State quarantine-other (MI)
- National Forests
- Canadian EAB regulated areas



U.S. Department of Agriculture
Animal Plant Health Inspection Service
Plant Protection & Quarantine



USDA/APHIS/PPQ
May 2008
Map by G. Gray



0 12.5 25 50 75 100 Miles
0 40 80 160 Kilometers

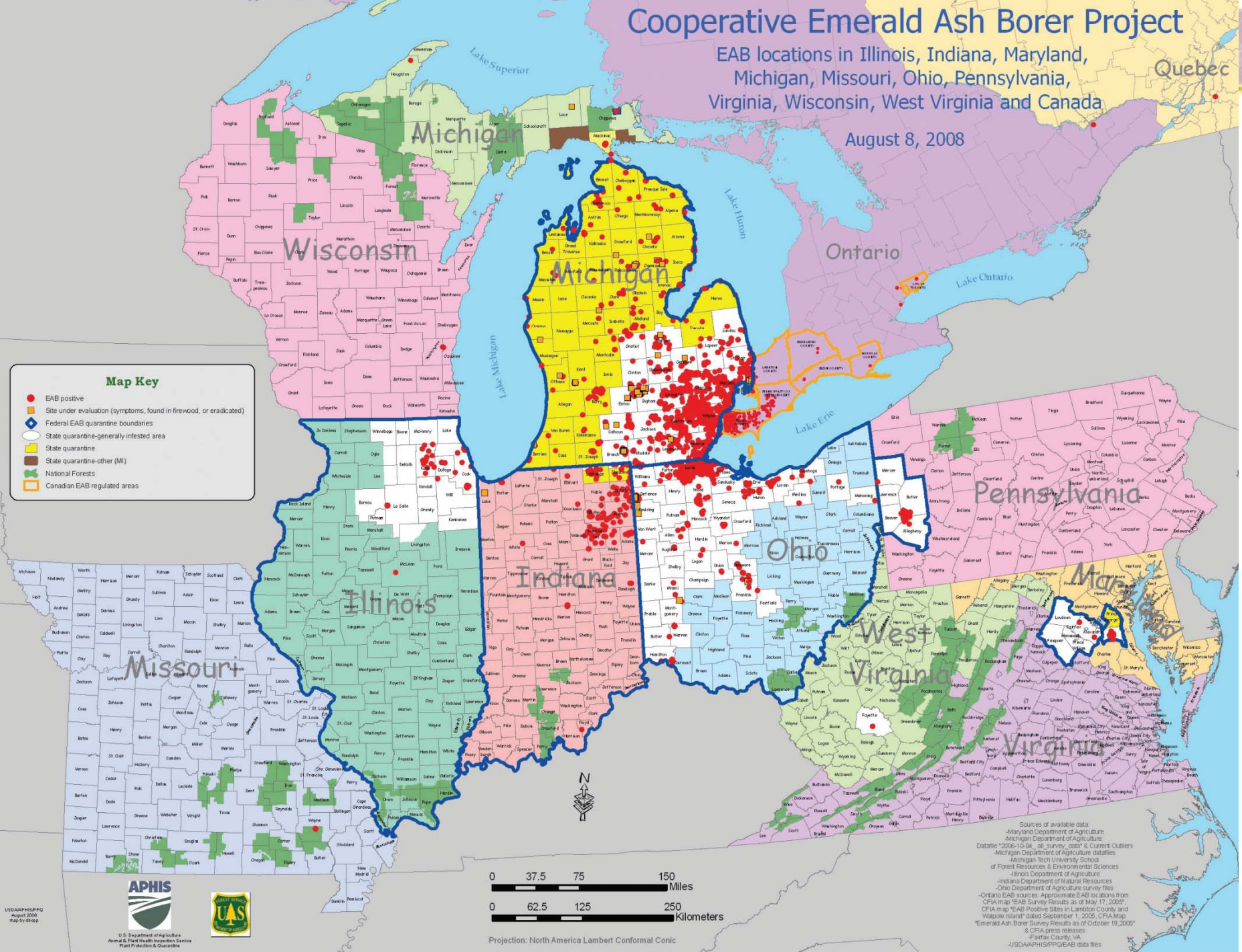
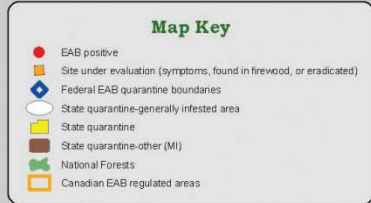
Sources of available data:
- Maryland Department of Agriculture
- Michigan Department of Agriculture
- Ontario 2006-10-04, all survey data & current Outbreaks
- Michigan Department of Agriculture, Michigan Tech University School of Forest Resources & Environmental Sciences
- Illinois Department of Agriculture
- Indiana Department of Natural Resources
- Ohio Department of Agriculture survey files
- Oregon EAB Sources: Approximate EAB locations from CFIA map "EAB Survey Results as of May 17, 2005"
- CFIA map "EAB Positive Sites in Lambert County and Walpole Island dated September 1, 2005, CFIA Map "Emerald Ash Borer Survey Results as of October 19, 2005" & CFIA press releases
- USDA/APHIS/PPQ/EAB data files

Cooperative Emerald Ash Borer Project

EAB locations in Illinois, Indiana, Maryland, Michigan, Missouri, Ohio, Pennsylvania, Virginia, Wisconsin, West Virginia and Canada

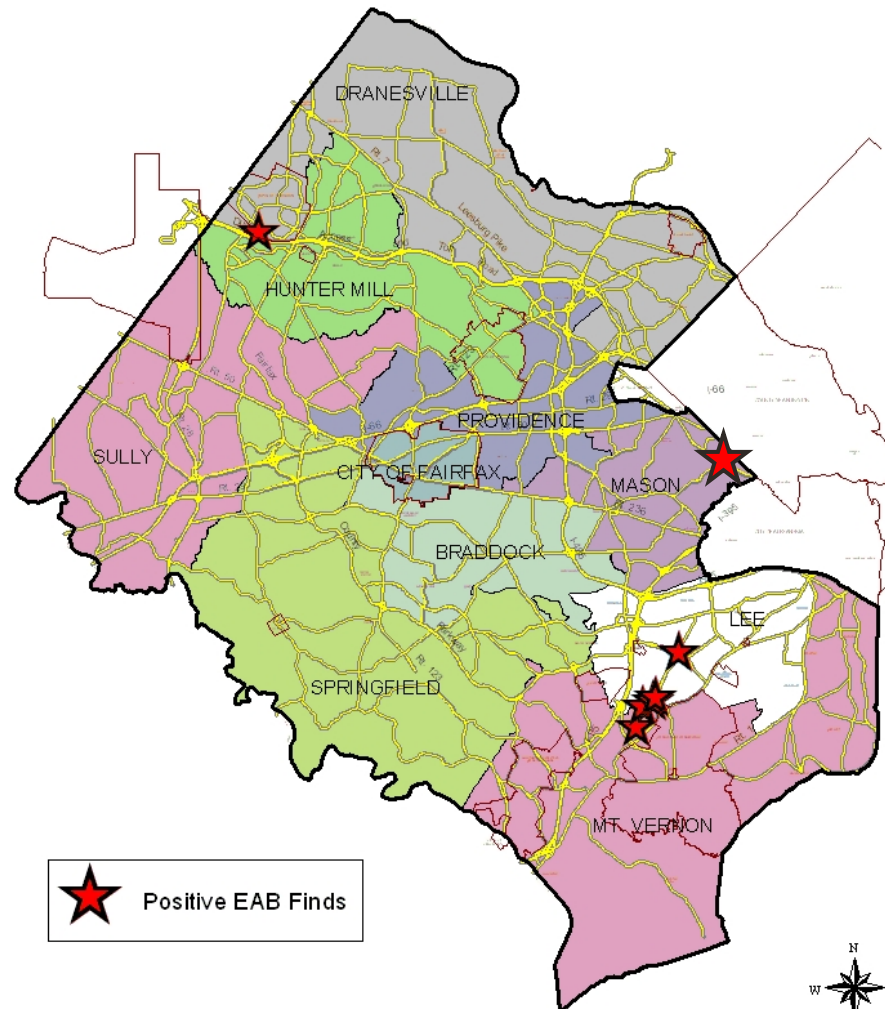
Quebec

August 8, 2008



Sources of available data:
 - Maryland Department of Agriculture
 - Michigan Department of Agriculture
 - Ontario EAB sources: Approximate EAB locations from
 - Pennsylvania Department of Agriculture
 - Virginia Department of Agriculture
 - West Virginia Department of Agriculture
 - Ohio Department of Natural Resources
 - Illinois Department of Natural Resources
 - Indiana Department of Natural Resources
 - Missouri Department of Conservation
 - U.S. Department of Agriculture
 - U.S. Forest Service
 - U.S. Fish and Wildlife Service
 - U.S. Environmental Protection Agency
 - U.S. Department of the Interior
 - U.S. Department of Energy
 - U.S. Department of Health and Human Services
 - U.S. Department of Justice
 - U.S. Department of Labor
 - U.S. Department of State
 - U.S. Department of Transportation
 - U.S. Department of the Treasury
 - U.S. Department of Veterans Affairs
 - U.S. Department of War
 - U.S. Department of the Navy
 - U.S. Department of the Army
 - U.S. Department of the Air Force
 - U.S. Department of the Coast Guard
 - U.S. Department of the Marine Corps
 - U.S. Department of the Navy
 - U.S. Department of the Air Force
 - U.S. Department of the Coast Guard
 - U.S. Department of the Marine Corps

Fairfax County Emerald Ash Borer Positive Finds





A

B

A. Bronze Birch Borer

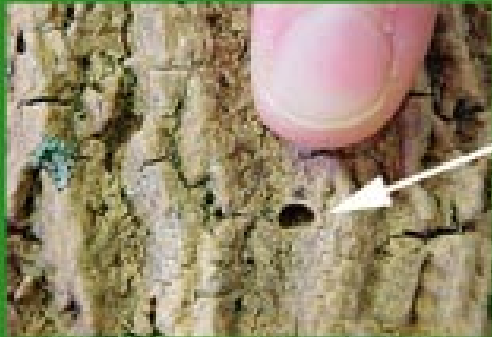
B. Two-lined Chestnut Borer

J. Zablotny, USDA APHIS PPQ

Emerald Ash Borer

Exit holes D - shaped

No frass or pupal cases

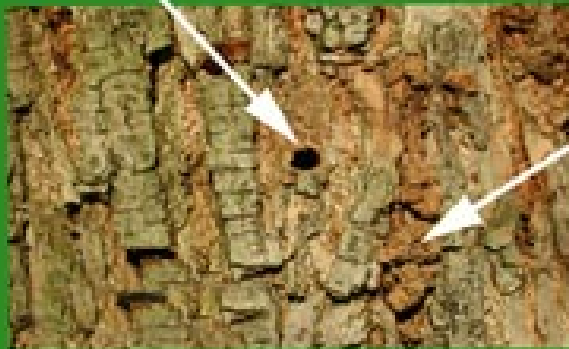


Clearwing Borers

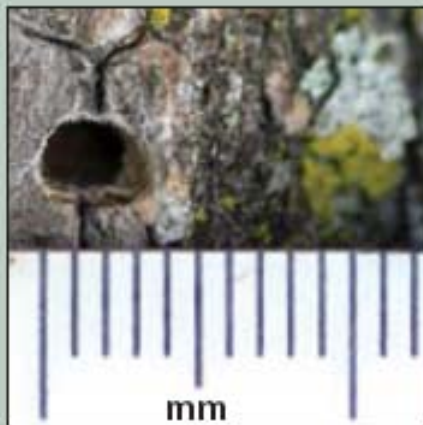
Exit holes round or oval

Frass on bark and ground

Pupal cases



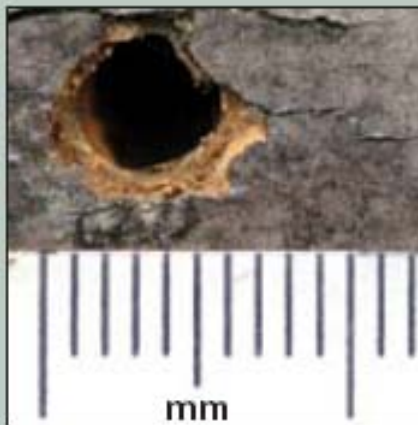
Michael Raupp



Emerald ash borer

Shape: D-shaped

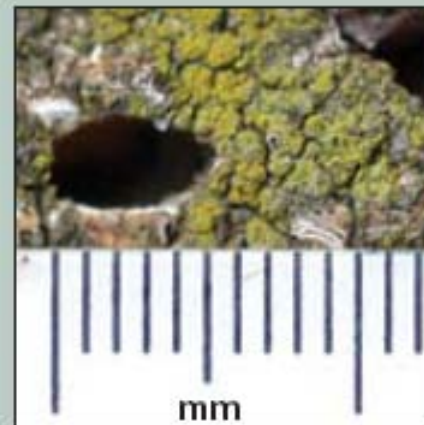
Width: 3 mm (1/8")



Banded ash clearwing borer

Shape: Round

Width: 6 mm (1/4")



Redheaded ash borer

Shape: oval-round

Width: 6 mm (1/4")









How it Gets Around

- Adult Flight - .5 to 2 mile
- Infested Firewood
- Infested AshLogs
- Infested Ash Nursery Stock
- Infested Large Ash Wood Chips (>1 inch in more than 1 dimension)



Quarantine

- All Hardwood Firewood
- All Wood Chips
- All Ash Nursery Stock
- All Ash Roundwood
- Does Not Apply Within Boundaries
(Arlington, Fairfax, Fauquier,
Loudoun, Prince William)



What's At Risk

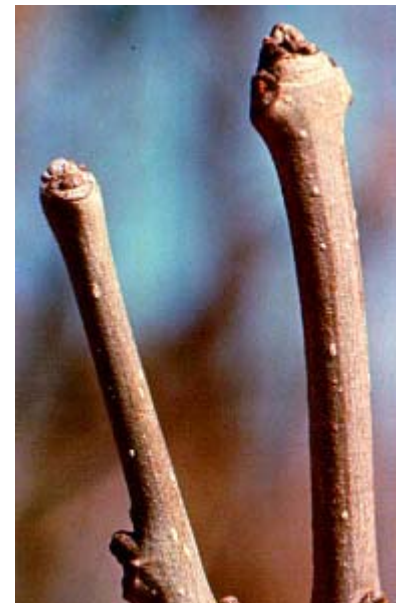
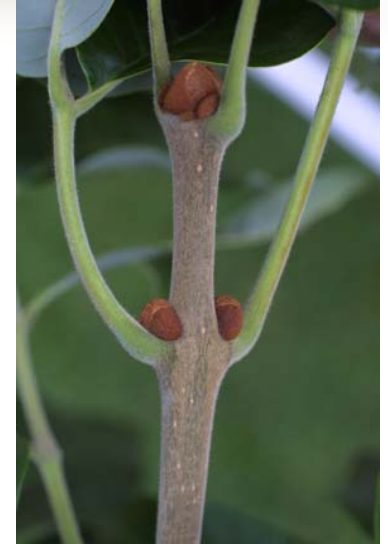
- All Ash Trees
- Ash is 1.5% of Forest Resource in Virginia - Mostly Scattered
- Lots of Ash Street Trees
- Grey Ash Sphinx Moth



What To Do

- Inventory Ash Street Trees
- Plan for Eventual Removal
- Set Aside Funds, Like for Capital Expense
- Consider Inter-planting Replacement Trees Now
- NO MONOCULTURES

Opposite Leaves



Alternate Leaves



Black
Walnut



Ailanthus



Box
Elder
Opposite Leaves



Hickory

Alternate
Leaves



White Ash



Green Ash



Box Elder



Pig-nut Hickory



Bitter Nut Hickory



Walnut